

St. Cloud State University 2007-2008

Quick Connect Guide for Windows Vista

Wireless Set-up Instructions for Windows Vista

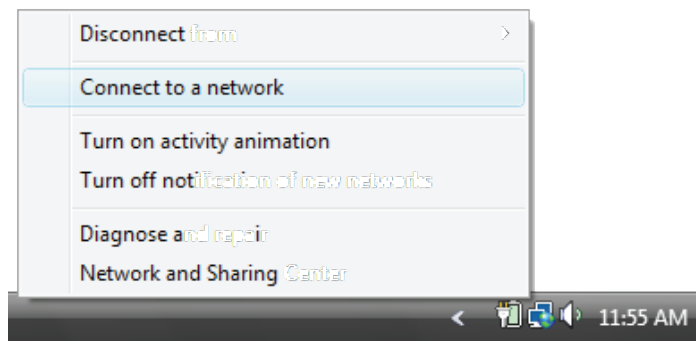
Follow these instructions to configure your laptop for use on SCSU's HuskyNet Wireless network via WPA (Wireless Protected Access.)

Requirements

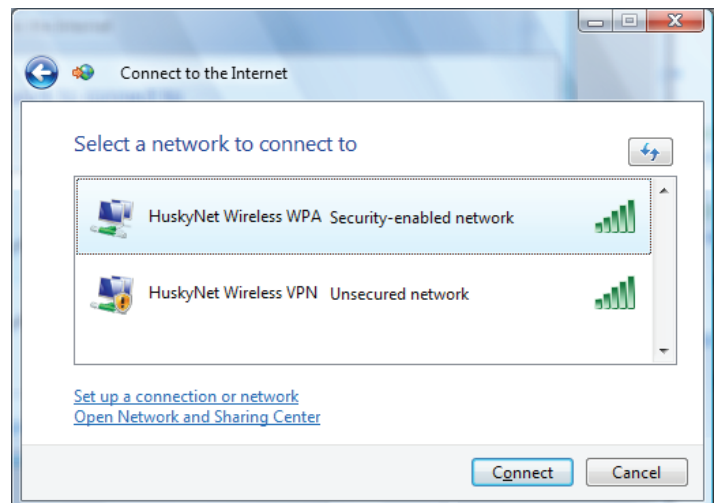
- A valid HuskyNetID and password
- Windows Vista (any version)
- For wireless: a built-in or installed wireless adapter in your computer

Note: Although most should work, we cannot guarantee compatibility with all wireless adapters.

1 In the lower right corner of your screen, near the time, you should see the network notification icon. Right-click on it and select **Connect to a network**.



2 In the window that opens, you should see a list of available wireless networks. Select **HuskyNet Wireless** and click **Connect**. If you see a message about connecting to an insecure network, click **Connect Anyway**.



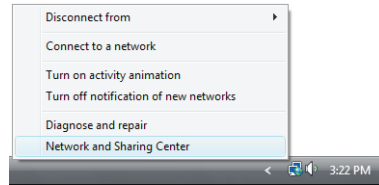
3 Open **Internet Explorer** and browse to any page. You should be automatically redirected to the **SCSU Wireless Welcome Center**. Follow the instructions on this Web site to complete configuration.



Wired (Ethernet) Configuration Instructions for Windows Vista

If you have tested your configuration and found that your computer is not properly configured to work on HuskyNet (see “Test Your Configuration” above), use these instructions to configure your computer on HuskyNet with an Ethernet cable.

1 In the lower-right corner of your screen, near the time, you should see the network notification icon. Right-click on it and select **Network and Sharing Center**.

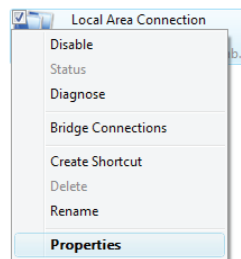


Test Your Configuration

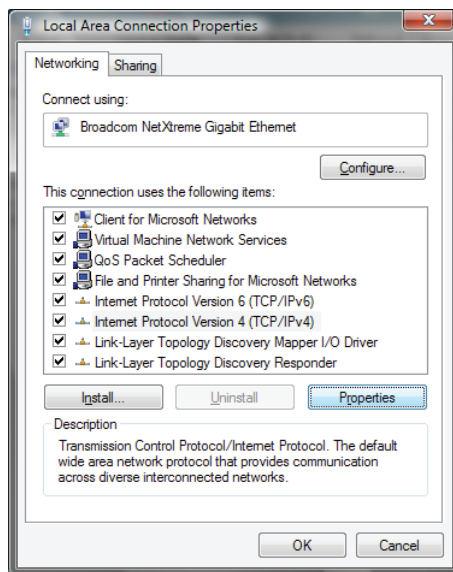
In most cases, your computer will already be properly configured to work on HuskyNet. To test this, connect your computer to the data-jack with an Ethernet cable. Then turn on your computer and open a Web browser. If you see the Computer Registration page, you can skip the configuration steps below.

2 In the **Network and Sharing Center**, on the left side under **Tasks**, click on **Manage network connections**.

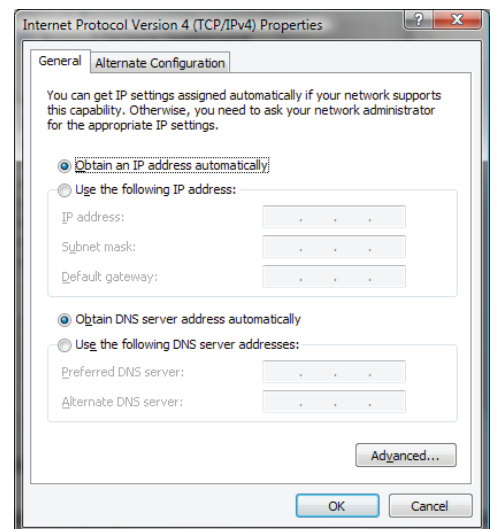
3 In the **Network Connections** window, you should see an icon called **Local Area Connection**. Right-click on it and select **Properties**.



4 In the **Local Area Connection Properties** window, select (do not uncheck) **Internet Protocol Version 4 (TCP/IPv4)** and click on the **Properties** button.



5 In the **Internet Protocol Version 4 (TCP/IPv4) Properties** window, make sure **Obtain an IP address automatically** and **Obtain DNS server address automatically** are both selected. Click **OK** in any remaining open windows.



Register Your Computer on the Network

Before you can use the Internet, you must register your computer on the campus network. To do this, open a Web browser (Internet Explorer, Firefox, Safari, etc.) and follow the on-screen instructions. You will need your HuskyNetID and password for this process.

Getting Help

The HelpDesk is able to assist you in getting your connection configured should you need help. The HelpDesk is located in Miller Center B43 (basement). You also can reach the HelpDesk by e-mail at helpdesk@stcloudstate.edu or by phone at (320) 308-2077.